

Guidelines for the Provision of Print Data

Contents:

1. Requirements for print data
2. Specifications
3. Dimensions
4. Foil transport directions
5. Commitment of Print Release

How to contact us:

Am Gewerbering 4/6
D-83533 Edling
Telephone: +49 (0)8071/-9083-0

E-Mail:

Your Account Manager

We work with these media:

CD / DVD

We work with these programs (MAC) using the most recent versions:

QuarkXPress, PageMaker, InDesign,
FreeHand, Adobe Illustrator, Corel Draw,
Photoshop, ArtPro

We accept the following file formats:

- open data of the above-mentioned programs
- EPS (not separated) with embedded fonts
- PDF (not separated)
- if pictures are to be used, please supply these separately from the PDF
- Profile ISO Coated v2, no RGB colour mode

For a 100% representation we need:

- all logos and pictures (TIF, EPS)
- all fonts existing or embedded
- a PDF-file as reference

Folding box/ foil/ label outlines:

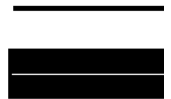
If you do not have a CAD program for stand-ardized creation of packing material outlines, we can provide you with punch outlines upon request and free of charge.

Type fonts and lines:

Fonts require character sets for image setter/printer and character sets for screen presentation. We gladly accept your ready-to-print data as open data or as EPS, in which the fonts have been converted into file path. Fonts may only be in one color (not in CMYK).

The line thickness must be at least 0.10mm positive and at least 0.15mm negative.

For comparison please include a PDF or a printout which is true to scale!



Pictures:

For smooth processing we prefer the images in TIFF format.

EPS images can only be processed if they have not been saved in JPEG compression but as a binary file.

Images are always compelled in Zoom 100% and always in the CMYK mode (print colour space) or as special colour, and not in the RGB mode (screen colour space).

Please save DCS EPS files as individual file!

Images are generated as 300 dpi and line scan as 1200 lpi.

Non-printing elements (such as technical drawings) must not be created in a printing ink used in the print image.

Colours:

Supplied data include the correct colour term

for special colour and spot colour, of the Pantone, HKS, or Scale colour space, which are clearly defined as spot colours or process colours (Euro-Scale).

Suitable colour spaces:

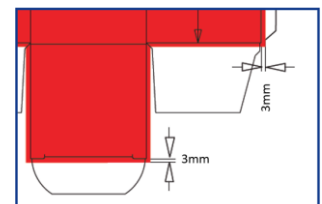
Pantone coated, HKS K, Scale.

Special colours (Pantone) are generally checked against current year Pantone fans.

Trimming and bleeding:

Bleed-off areas, images, and lines must protrude the package outline by 3 mm.

Inside of the packages the bleed must also be 3 mm on the dust flap, tuck flap, and on the seal flap. Please do not define any spread and choke for fonts and images.



Die line and finishing:

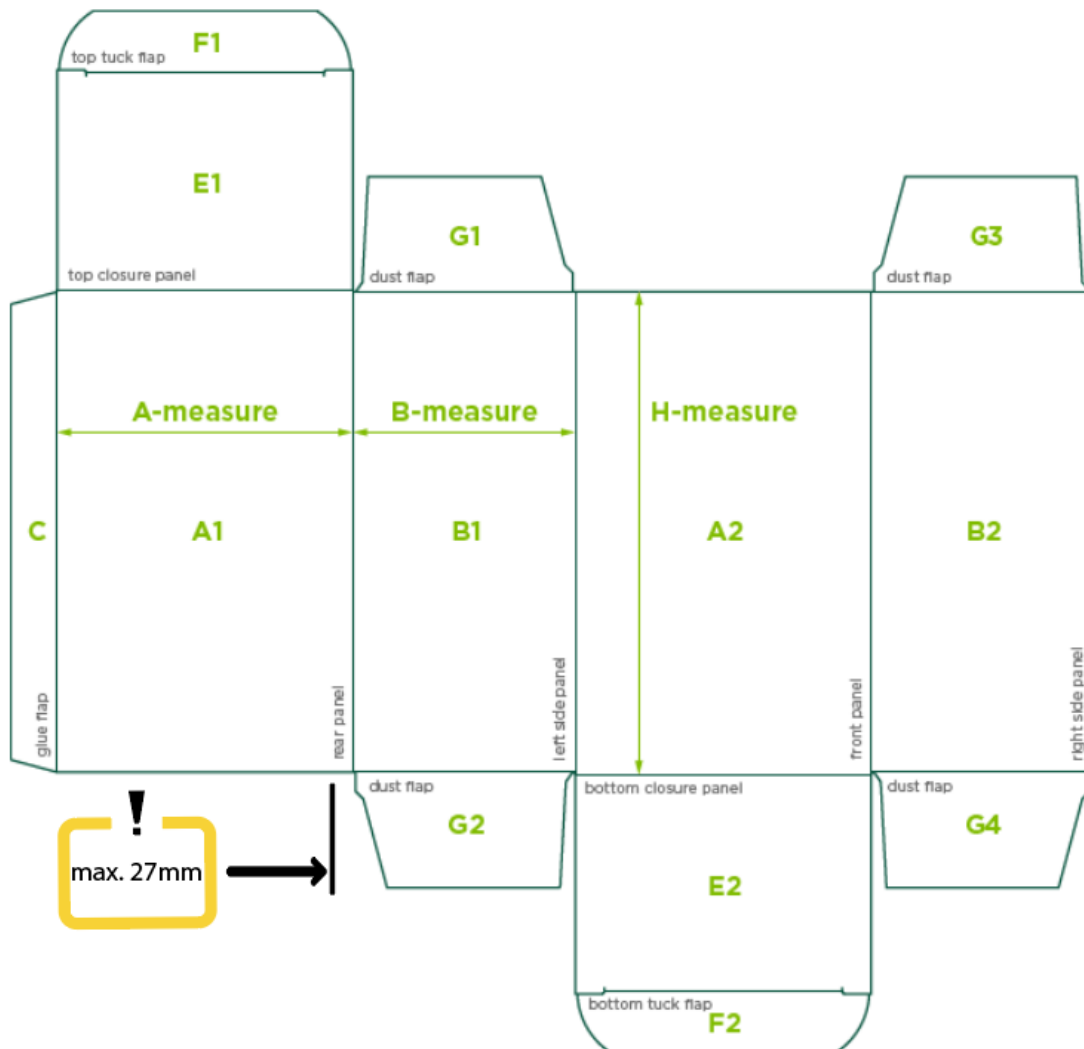
The die line / other finishings must be presented in one colour and not appear in the printed product. Further it must be placed on top of the package in the foreground.

Areas without lacquer can be marked in a colour which is not used in the product. These Lacquer-free areas must be in the background and must not cover any other elements.

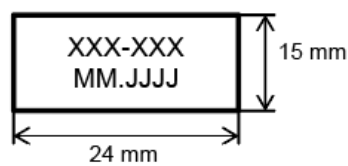
Space requirement for printing batch and expiry date on boxes / labels

Reserved, print-free space for the imprint of batch number and expiry date on an insert-tab (max. 27mm long) / label Size for imprint

Technical data for folding boxes



Reservierter Platz für den Druck von Chargen-Nr. und MHD /
reserved for printing of batch no. and expiry date
Größe für Aufdruck:

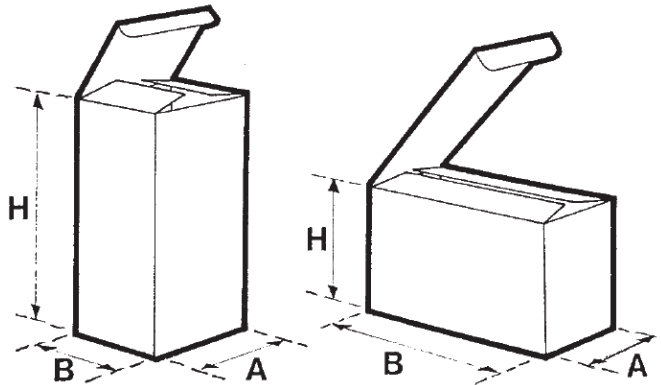


Folding box:

A = dimension at the base area parallel to the axis of rotation of the tuck flaps

B = second dimension on the base area

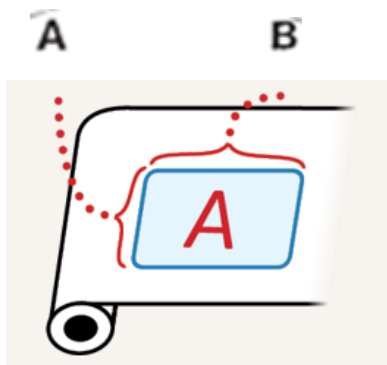
H = height, the vertical dimension between the two tuck flaps



Label:

A = height of the label (perpendicular to the backing material)

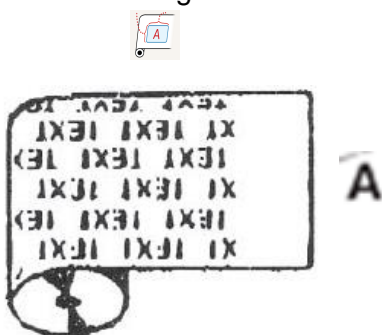
B = length of the label (in line with the backing material)



Film / blister:

A = width of the material

B = cut-off length of the material



Aluminium Folie:

Alufolie: 20 µm

Standard Flexodruck, 1-farbig

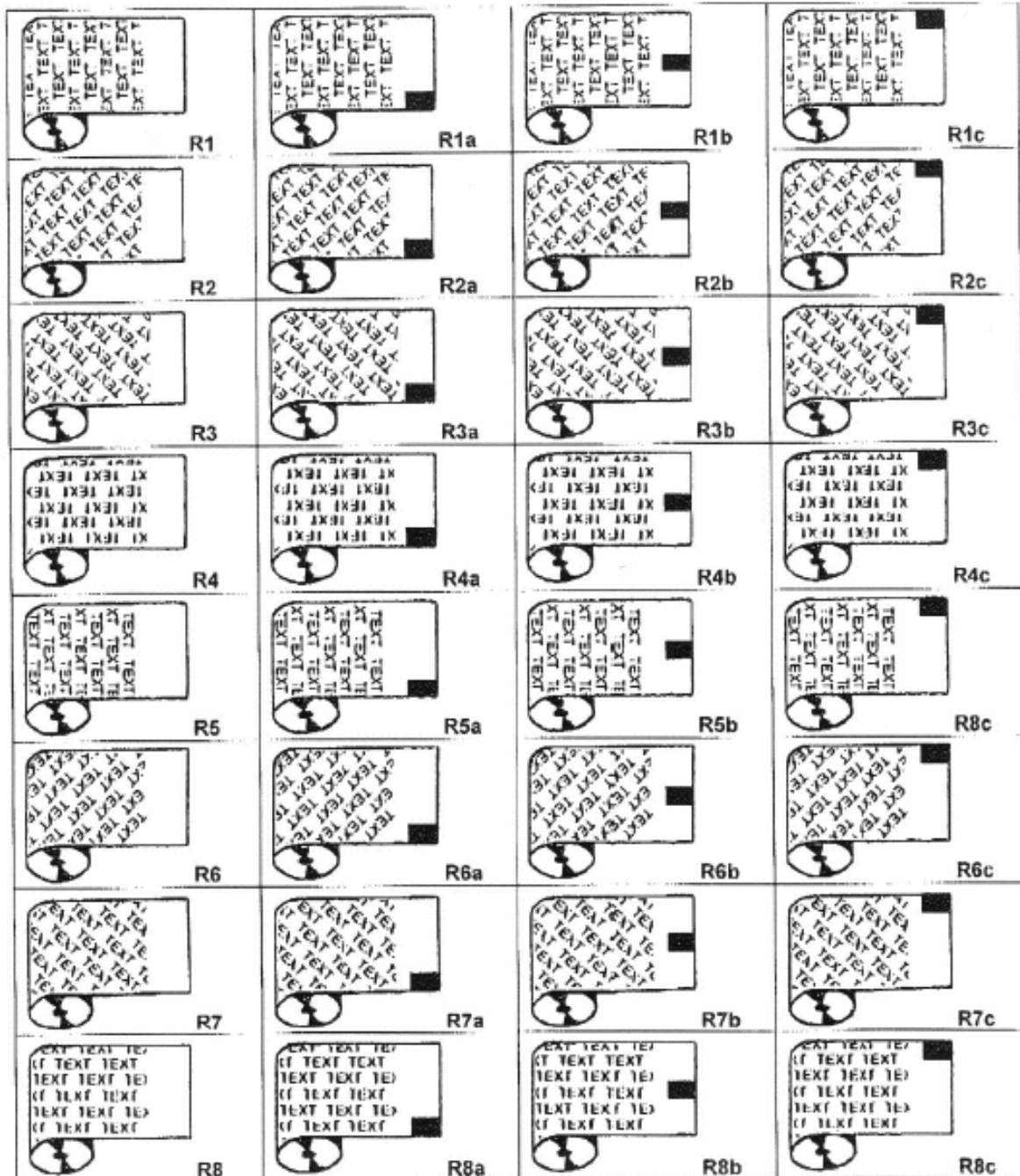
Fortlaufender Text

Aluminium Foil:

Alufolie: 20 µm

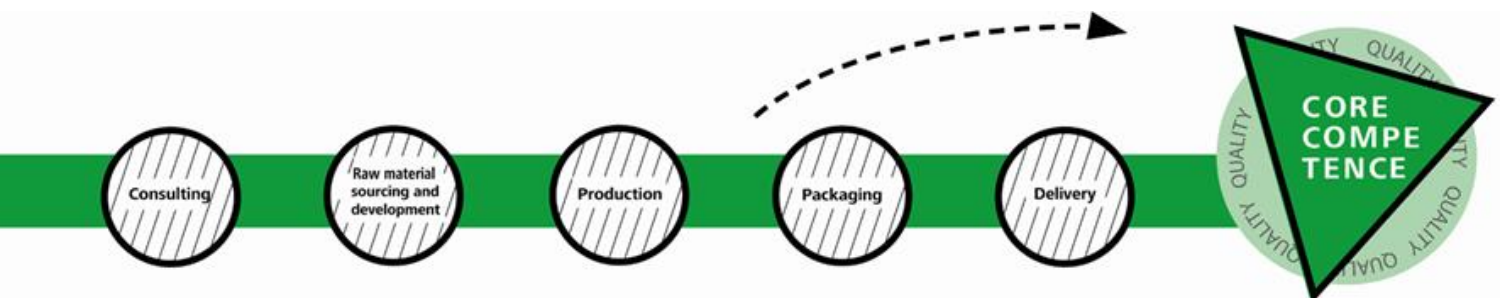
Standard flexoprint, 1-coloured

Continuous text



Notes

1. You place your order for preparations of the submitted print data for the respective print job, this is legal and binding.
2. We would like to point out that you, as a customer are responsible and liable for all advertising messages. We assume that all texts, images and further media transmitted to Goerlich Pharma is not subject to the rights of third parties.
3. Once you approve printing, you assume all responsibilities for possible typos or misspellings, and at the same time you declare that the phrasing is legally correct. Goerlich Pharma will not check the contents of the statements made.
4. With your release for print based on the proof sheet we sent you, the Goerlich Pharma is exempt from liability.



“We communicate openly and transparently at all times. We develop, test, evaluate and go the extra mile for you, because development sometimes is like a marathon run.

The goal is always clearly in sight:

A PERFECT PRODUCT IN PERFECT PACKAGING.”

How to contact us:

Am Gewerbering 4/6, D-83533 Edling

Tel: +49 (0)8071/-9083-0

Mail: sales@goerlich-pharma.com